

## A Flexible Platform

Portfolio Analytics is a fast evolving platform, enabling you to benefit from the latest innovations in risk management and to comply with AIFMD regulatory requirements.

## Focused Cash-Flow Based Methodologies

Portfolio Analytics implements state-of-the-art methodologies for relevant analysis of Private Equity and Real Assets funds.

## Dedicated Trainings

Portfolio Analytics is a fully documented, user friendly application for which BMA also provides hands-on trainings.

## Support

BMA is committed to provide best-in-class support, with presence in Luxembourg, London and Paris.

# Portfolio Analytics

## Performance & Risk Analytics for Private Equity - Real Estate and Infrastructure Funds

BMA Portfolio Analytics is an innovative performance and risk analytics Web platform dedicated to illiquid investments and real assets, such as Private Equity - Real Estate and Infrastructure.



### Cloud-based Technology

Portfolio Analytics is mainly deployed as a Software as a Service (SaaS). No installation required. Create/access dashboards and reports from computer, laptop, and tablet.



### Centralized Data Warehouse

Access and analyze consistent data across your organization with dedicated data models covering holdings, realized and projected cash-flows, investment characteristics, etc.



### Powerful Analytics

Sophisticated slice&dice functionalities coupled with key performance metrics. Analysis of projected vs. realized cash-flows. Benchmark indicators (e.g. Public Market Equivalent) on standard/composite indices. Generalized sensitivities (e.g. CS01, DV01, Net Equity Delta, FX sensitivities).



### Portfolio and Performance Metrics

All standard metrics (e.g. IRR, TVPI, DPI, etc.) and cutting edge metrics (e.g. MIRR, Fair Value, etc.) can be computed at all levels of the fund, in cross-section or time series. Analyze contribution of specific sub-groups of investments.



### On-Demand Report Generation

Generate bespoke dashboards in a few clicks. Periodic dashboards are automatically refreshed. Share dashboards across your organization, create PDF reports from dashboards on-demand.



### AIFMD Ready Solution

Portfolio Analytics provides all the necessary functionalities to comply with AIFMD risk managers requirements.

## Who We Are

BMA is an advisory company, with best-in-class quantitative skills, benefitting from the experience of its founding partners in risk management, in the banking and investment industry, in Luxembourg, the UK and France.

BMA has a **true knowledge and practical experience of quantitative techniques** applied to asset and risk management in investment funds.

BMA can **propose innovative solutions and think outside the box**, building on first-hand experience of applied statistics, econometrics and economic analysis.

BMA has developed a **complete set of quantitative and analytic tools**, enabling the design of bespoke reports and dashboards, with a wide coverage in terms of investment vehicles, asset classes and financial instruments.

## Who We Serve

Fund and Asset Managers, Management Companies;

Fund Administrators, Depository Banks;

General Purpose Consulting Firms.



### Innovative Quantitative Solutions

Specific risk indicators for real assets (e.g. IRR-at-Risk, Stressed NPV, etc.).  
Powerful scenario engine and reverse stress testing methods.  
Extended CAPM framework for illiquid investments.



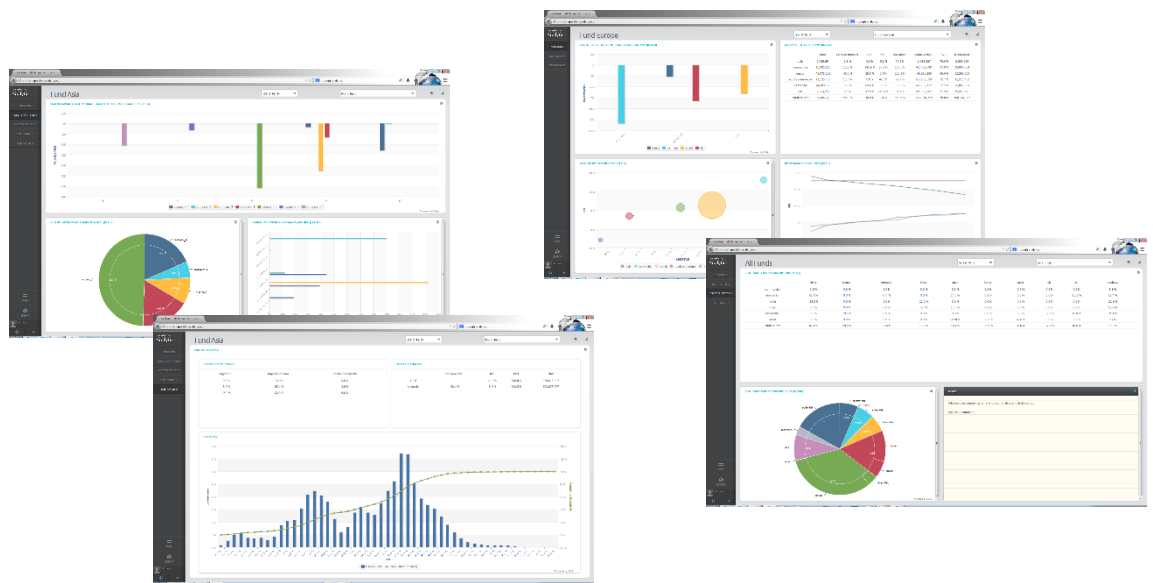
### Flexible User Management

User management made very easy. Choose user profiles that best fit your requirement. From full access for GPs and risk managers, to customized views for LPs and institutional investors.



### Serviced Platform

Portfolio Analytics is a serviced platform with best-in-class support and a dedicated team of risk analysts.



Free trial version available on demand.



Check our website for dedicated videos.

<http://www.bmarisk.com/portfolio-analytics-for-pere/>



**Norddine Bennani**  
Managing Director

**London**  
+44 7545306604

[norddine.bennani@bmarisk.com](mailto:norddine.bennani@bmarisk.com)

**Dominique Marchal**  
Managing Director

**Luxembourg**  
+352 691 732 411

[dominique.marchal@bmarisk.com](mailto:dominique.marchal@bmarisk.com)

